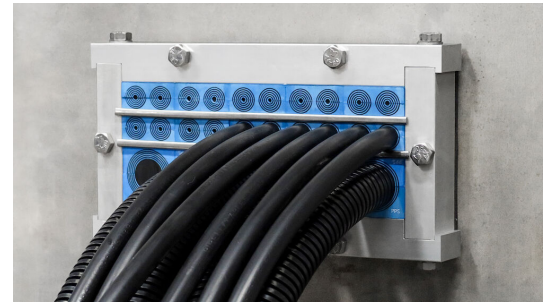




# Roxtec CRF Transits

For cables or plastic conduits in rolling stock.

The Roxtec CRF transit is designed and tested for rolling stock applications. The lightweight aluminum frame is openable to simplify initial installations and retrofit work when cables or plastic conduits need to be added or changed. The frame can accommodate either Roxtec CM or CM PPS sealing modules with Multidiameter™ for adaptability to cable dimensions or Roxtec CRF or CRF PPS modules for fast serial production with known cable sizes. The PPS versions of the two types of modules provide fire protection for plastic conduit applications.



- Light-weight
- Area efficient

## Product characteristics



Fire rated



IP/UL NEMA

## Structure of installation



Cabinets & enclosures

## Ratings & certificates

### Fire

- E/EI rating according to EN 45545 E30

### Tightness

- IP 66

## Frame dimensions

### in/lbs

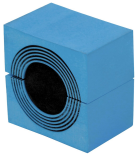
The frame variants below are a limited selection. For the full range of frames and configurations, please visit [roxtec.com](https://www.roxtec.com).

Product	Frame openings	Packing space	External dimensions WxHxD	Aperture dimensions w x h	Weight	Art. no
CRF 60x60 ANODIZ	1	2.362 x 2.362	4.252 x 4.409 x 1.378	2.756(+0/-0) x 2.362(+0/-0)	1.6	214613
CRF 80x160 ANODIZ	1	6.299 x 3.15	8.189 x 5.591 x 1.378	6.693(+0/-0) x 3.15(+0/-0)	2.8	214622
CRF 80x180 ANODIZ	1	7.087 x 3.15	8.976 x 5.591 x 1.378	7.48(+0/-0) x 3.15(+0/-0)	3	214623
CRF 80x200 ANODIZ	1	7.874 x 3.15	9.764 x 5.591 x 1.378	8.268(+0/-0) x 3.15(+0/-0)	3.2	214624
CRF 60x90 ANODIZ	1	3.543 x 2.362	5.433 x 4.409 x 1.378	3.937(+0/-0) x 2.362(+0/-0)	1.8	214614
CRF 60x120 ANODIZ	1	4.724 x 2.362	6.614 x 4.409 x 1.378	5.118(+0/-0) x 2.362(+0/-0)	2	214615
CRF 60x160 ANODIZ	1	6.299 x 2.362	8.189 x 4.803 x 1.378	6.693(+0/-0) x 2.362(+0/-0)	2.6	214616
CRF 60x180 ANODIZ	1	7.087 x 2.362	8.976 x 4.803 x 1.378	7.48(+0/-0) x 2.362(+0/-0)	2.8	214617
CRF 2x60x180 ANODIZ	2	7.087 x 2.362	16.85 x 4.803 x 1.378	7.48(+0/-0) x 2.362(+0/-0)	5	214618
CRF 80x80 ANODIZ	1	3.15 x 3.15	5.039 x 5.197 x 1.378	3.543(+0/-0) x 3.15(+0/-0)	1.9	214619
CRF 80x120 ANODIZ	1	4.724 x 3.15	6.614 x 5.197 x 1.378	5.118(+0/-0) x 3.15(+0/-0)	2.2	214620
CRF 2x80x120 ANODIZ	2	3.15 x 4.724	12.126 x 5.197 x 1.378	5.118(+0/-0) x 3.15(+0/-0)	3.5	214621



# Sealing components

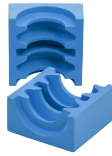
## Sealing components



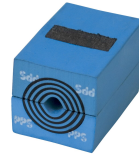
CM module with Multidiameter™



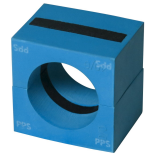
C Stayplate



CRF modules



CM PPS module with Multidiameter™



CRF PPS modules

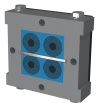


Lubricant Blue

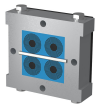
For detailed information, please visit [roxtec.com](https://www.roxtec.com).

# Pre-configured transit kits

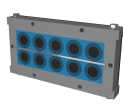
in/lbs



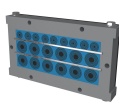
CRF 60x60/4 CM/PPS



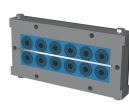
CRF 60x60/4 CM



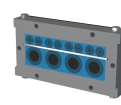
CRF 80x200/10 CM/PPS



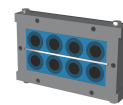
CRF 80x180/20 CM/PPS



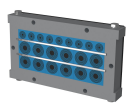
CRF 60x180/12 CM



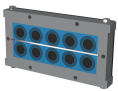
CRF 60x160/12 CM



CRF 80x160/8 CM



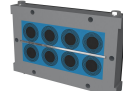
CRF 80x180/21 CM



CRF 80x200/10 CM



CRF 60x120/9 CM/PPS



CRF 80x160/8 CM/PPS

Product	Configuration	External dimensions WxHxD	Aperture dimensions w x h	Weight	Art. no
CRF 60x60/4 CM/PPS	2x (0.394-0.984), 2x (0.394-0.945)	4.252 x 4.409 x 1.378	2.756(+0/-0) x 2.362(+0/-0)	2	215957
CRF 60x60/4 CM	4x (0.394-0.984)	4.252 x 4.409 x 1.378	2.756(+0/-0) x 2.362(+0/-0)	2	215951
CRF 80x200/10 CM/PPS	5x (0.846-1.358), 5x (0.846-1.319)	9.764 x 5.591 x 1.378	8.268(+0/-0) x 3.15(+0/-0)	4.7	215964
CRF 80x180/20 CM/PPS	6x (0.394-0.984), 6x (0.394-0.945), 8x (0.138-0.650)	8.976 x 5.591 x 1.378	7.48(+0/-0) x 3.15(+0/-0)	4.4	215963
CRF 60x180/12 CM	12x (0.394-0.984)	8.976 x 4.803 x 1.378	7.48(+0/-0) x 2.362(+0/-0)	3.9	215953
CRF 60x160/12 CM	8x (0.138-0.650), 4x (0.846-1.358)	8.189 x 4.803 x 1.378	6.693(+0/-0) x 2.362(+0/-0)	3.6	215952
CRF 80x160/8 CM	8x (0.846-1.358)	8.189 x 5.591 x 1.378	6.693(+0/-0) x 3.15(+0/-0)	4.1	215954
CRF 80x180/21 CM	12x (0.394-0.984), 9x (0.157-0.571)	8.976 x 5.591 x 1.378	7.48(+0/-0) x 3.15(+0/-0)	4.4	215955
CRF 80x200/10 CM	10x (0.846-1.358)	9.764 x 5.591 x 1.378	8.268(+0/-0) x 3.15(+0/-0)	4.7	215956
CRF 60x120/9 CM/PPS	3x (0.846-1.319), 6x (0.138-0.650)	6.614 x 4.409 x 1.378	5.118(+0/-0) x 2.362(+0/-0)	2.6	215958
CRF 80x160/8 CM/PPS	4x (0.846-1.358), 4x (0.846-1.319)	8.189 x 5.591 x 1.378	6.693(+0/-0) x 3.15(+0/-0)	4.1	215959



The product information provided by Roxtec does not release the purchaser of the Roxtec system, or part thereof, from the obligation to independently determine the suitability of the products for the intended process, installation and/or use.

Roxtec gives no guarantee for the Roxtec system or any part thereof and assumes no liability for any loss or damage whatsoever, whether direct, indirect, consequential, loss of profit or otherwise, occurred or caused by the Roxtec systems or installations containing components not manufactured by an authorized manufacturer and/or occurred or caused by the use of the Roxtec system in a manner or for an application other than for which the Roxtec system was designed or intended.

Roxtec expressly excludes any implied warranties of merchantability and fitness for a particular purpose and all other express or implied representations and warranties provided by statute or common law. User determines suitability of the Roxtec system for intended use and assumes all risk and liability in connection therewith. In no event shall Roxtec be liable for indirect, consequential, punitive, special, exemplary or incidental damages or losses.

The Roxtec products are offered and sold in accordance with the conditions of the Roxtec General Terms of Sales. The latest version of the Roxtec General Terms of Sales can be downloaded from <https://www.roxtec.com/en/about-us/about-roxtec/general-terms-of-sales/>

We reserve the right to make changes to the product and technical information without further notice. Any errors in print or entry are no claims for indemnity. The content of this publication is the property of Roxtec International AB and is protected by copyright.

This document was generated on: 2024-04-18